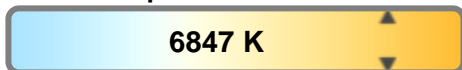


Color Temperature:



Total Lumen Output:
5015 lm

Light Quality:

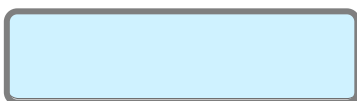


Peak:
1465042 cd

Light Efficiency:



Power: 421 W



CIE 1931
x: 0.309
y: 0.318

Test: Wash Zoom In

Date: 7/27/2018

Voltage: 116 V

Current: 3.63 A

Frequency: 60 Hz

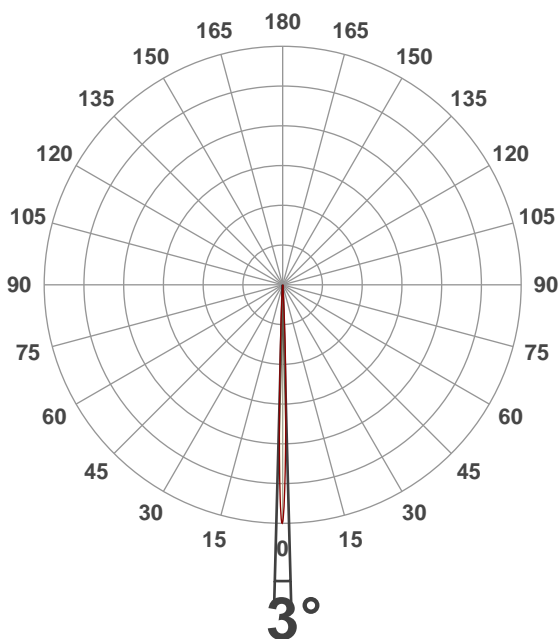
CRI: 75.4

CQS: 71.1

TM30: 74.9

Note:

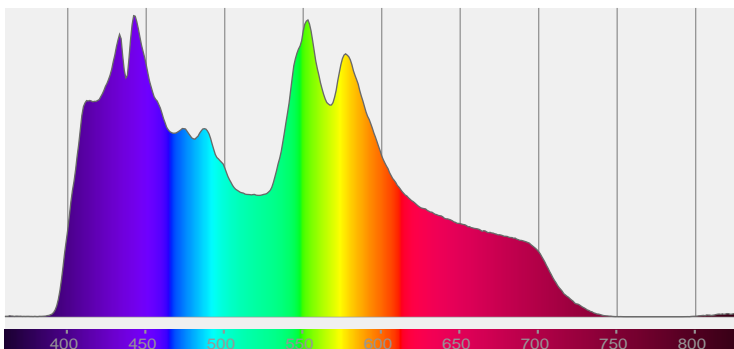
Beam Angle



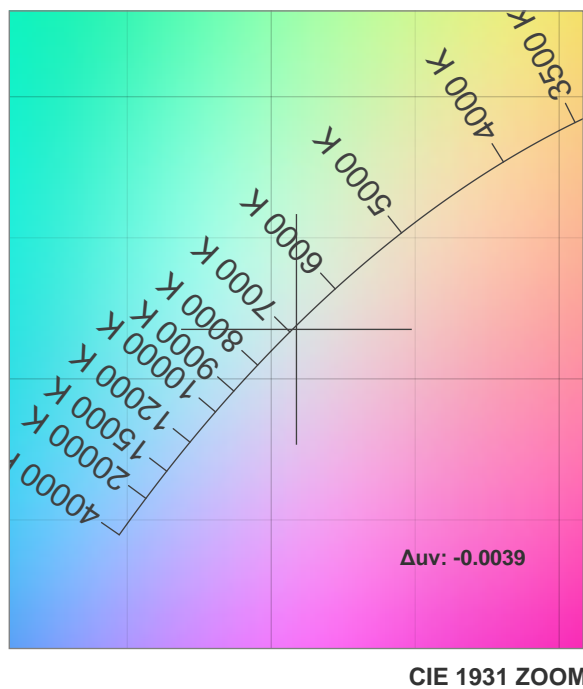
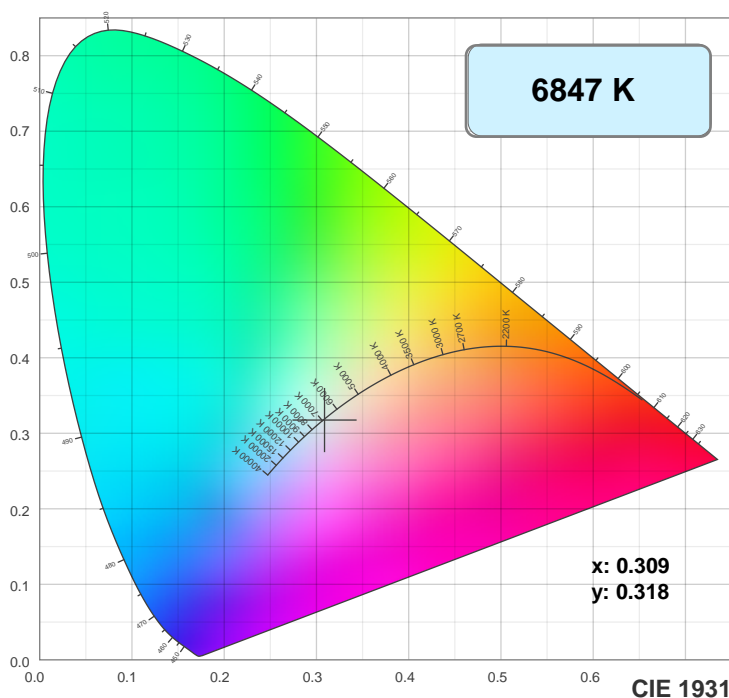
Beam Angle 50%	Field Angle 10%	Cutoff Angle 2.5%
3°	5.9°	7.4°

Spectra

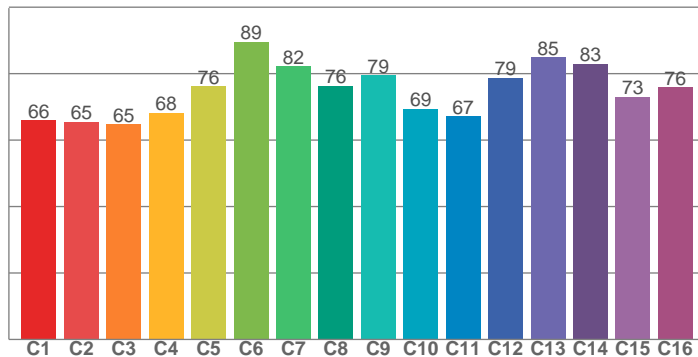
Dominant Wavelength: 360nm



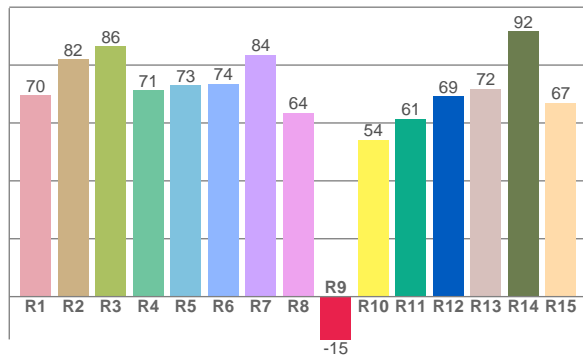
Color Details



TM30: 74.9



CRI: 75.4 (R1-R8)



CRI R values, only R1-R8 are used to calculate final CRI value

R1	R2	R3	R4	R5	R6	R7	R8	R9	R10	R11	R12	R13	R14	R15
69.5	81.9	86.4	71.4	73.0	73.5	83.6	63.6	-14.8	54.2	61.5	69.3	71.8	91.7	66.9

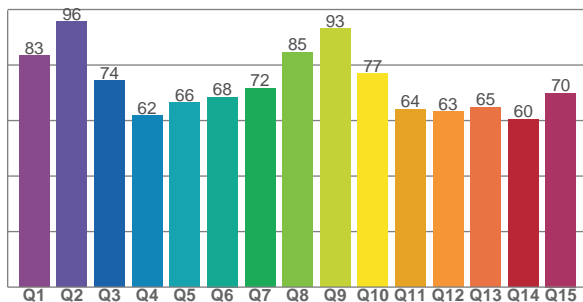
TM30 C Values, 16 binned values out of total of 99 C values

C1	C2	C3	C4	C5	C6	C7	C8	C9	C10	C11	C12	C13	C14	C15	C16
66.0	65.5	64.8	68.2	76.1	89.5	82.3	76.3	79.5	69.4	67.2	78.7	84.9	83.0	73.0	75.8

QQS Q Values

Q1	Q2	Q3	Q4	Q5	Q6	Q7	Q8	Q9	Q10	Q11	Q12	Q13	Q14	Q15
83.5	95.6	74.4	61.7	66.4	68.5	71.6	84.6	93.2	76.9	64.0	63.2	64.8	60.5	70.0

CQS: 71.1



Color Parameters

Color Temperature	Color Rendering Index	Red Component	Color Fidelity	Color Gamut	Color Quality Scale	Color Coordinate CIE 1931	Color Coordinate CIE 1931	Color Coordinate	Color Coordinate	Color Deviation from Black Body
CCT	CRI	CRI R9	TM30 Rf	TM30 Rg	CQS	x	y	u	v	Δuv
6847 K	75.4	-14.8	74.9	91.5	71.1	0.309	0.318	0.199	0.308	-0.0039

TM30 Details

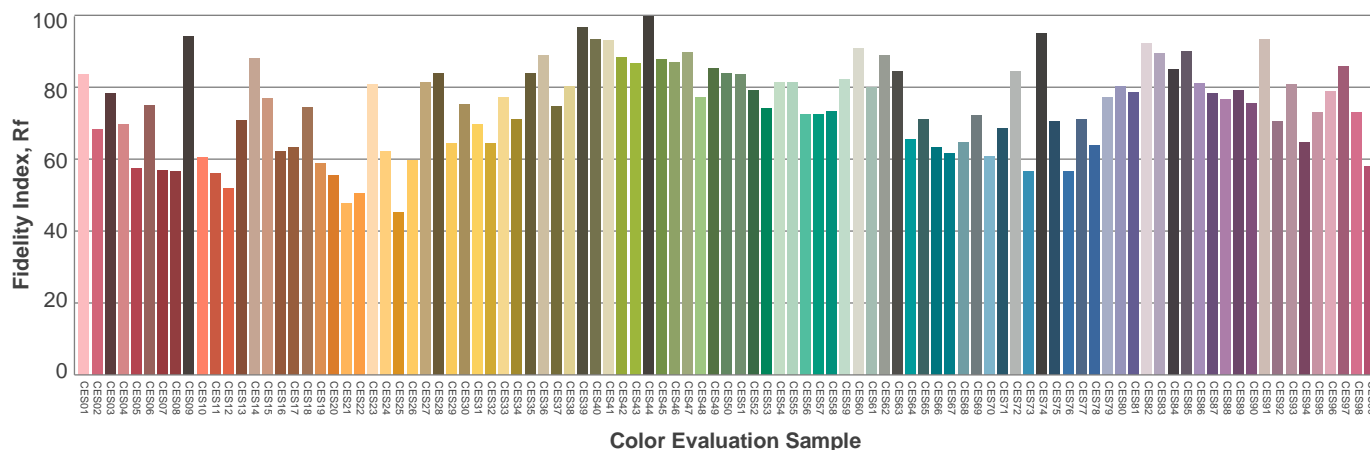
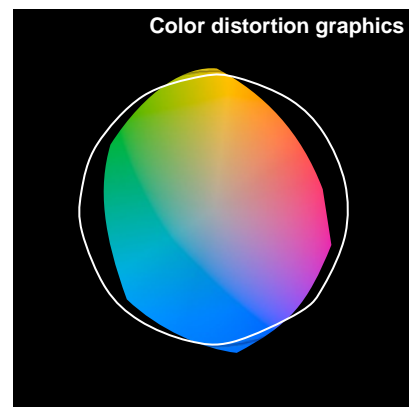
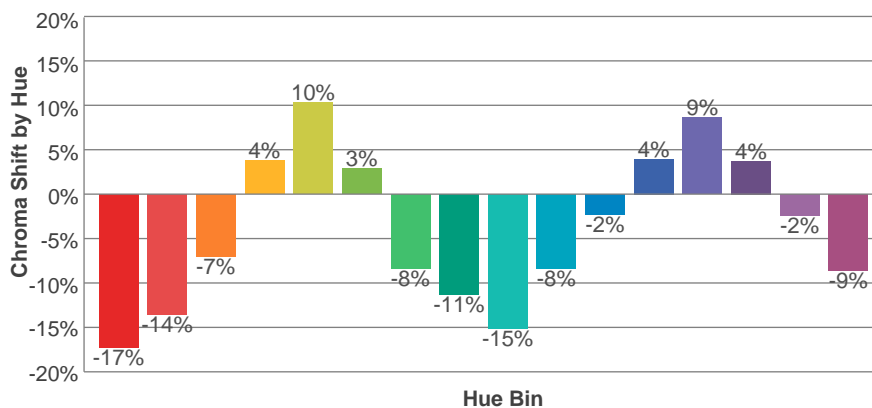
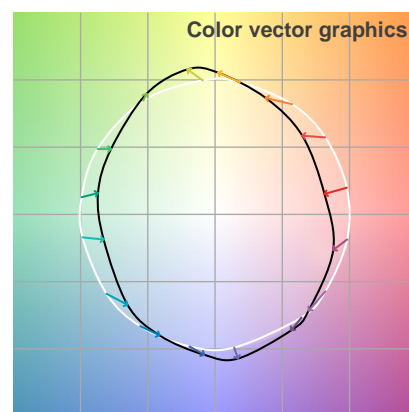
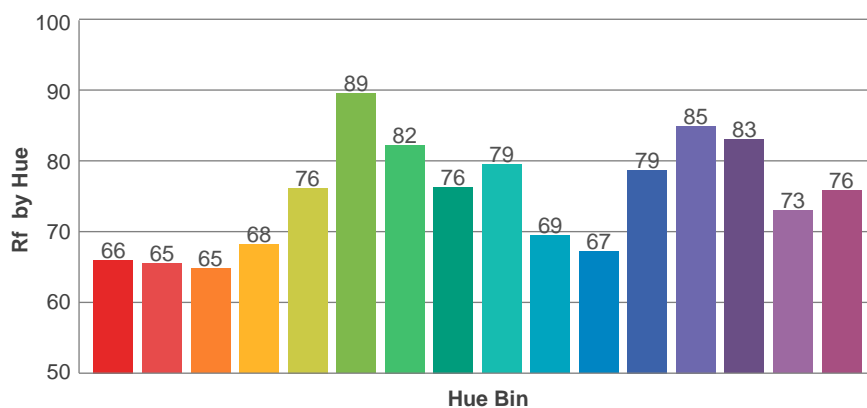
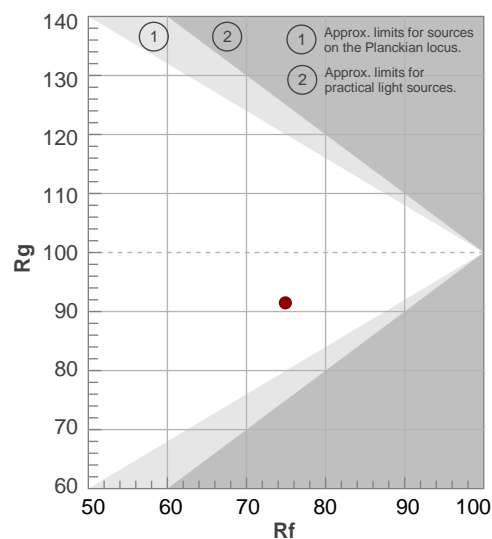
Rf 74.9

Fidelity Index Rf

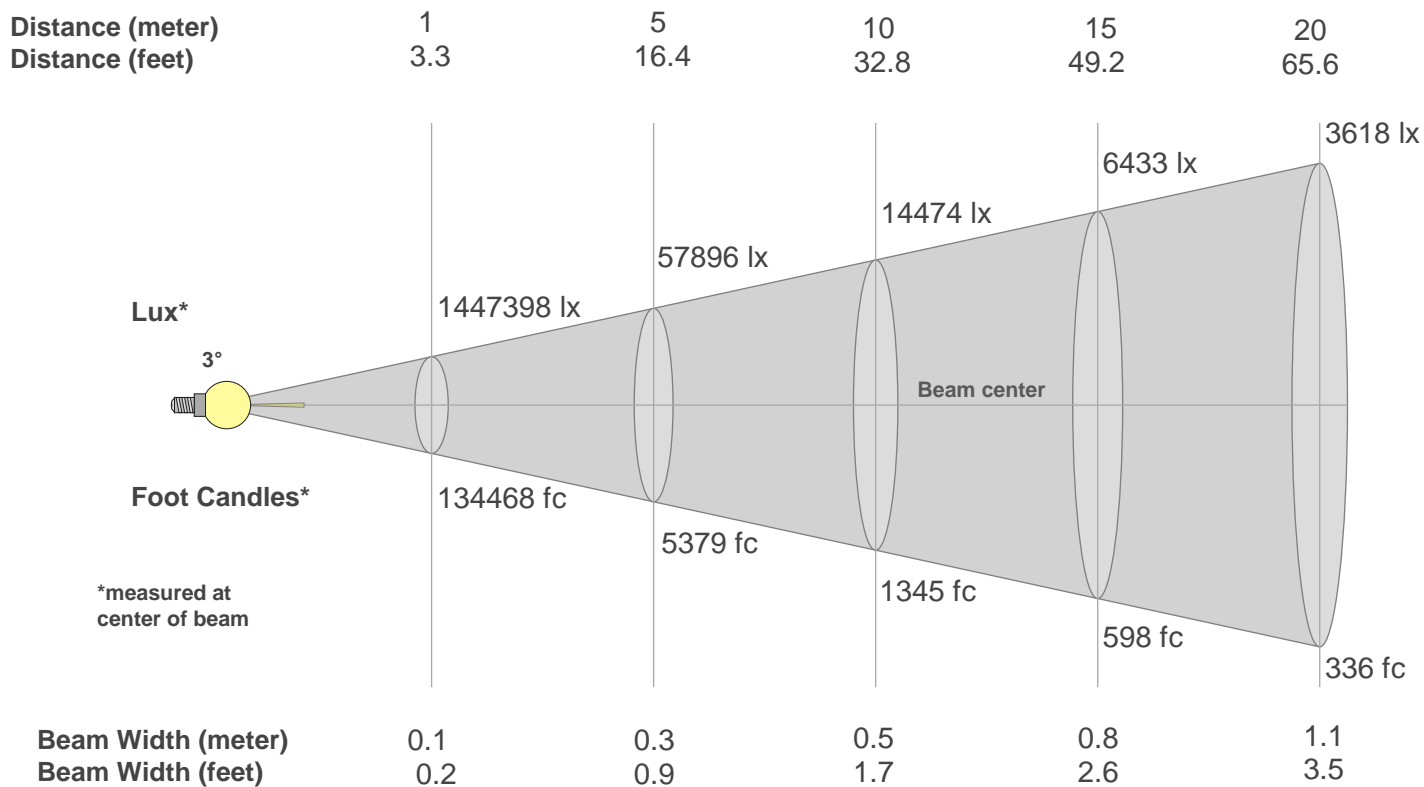
Rg 91.5

Gamut Index Rg

Hue Bin	R _f	Graphic shifts (%)	
		Chroma	Hue
1	66	-17%	-1%
2	65	-14%	11%
3	65	-7%	19%
4	68	4%	17%
5	76	10%	10%
6	89	3%	-5%
7	82	-8%	-6%
8	76	-11%	-5%
9	79	-15%	5%
10	69	-8%	15%
11	67	-2%	16%
12	79	4%	12%
13	85	9%	1%
14	83	4%	-12%
15	73	-2%	-19%
16	76	-9%	-10%



Beam Details



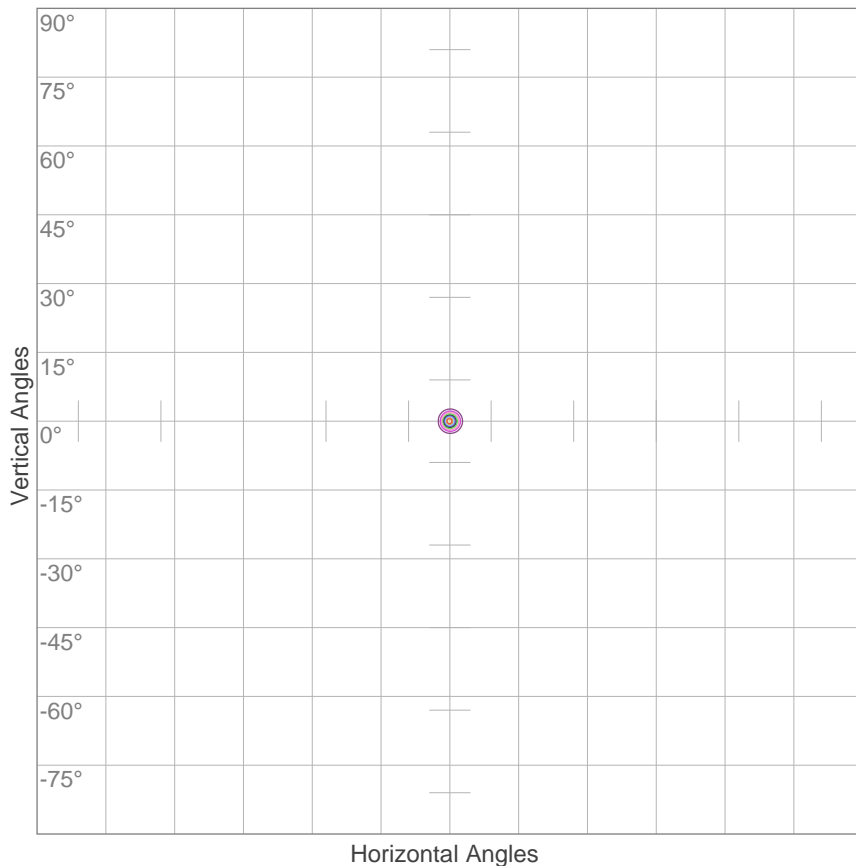
Beam Intensities from 1-20m

m	1	2	3	4	5	6	7	8	9	10	11	12	13	14	15	16	17	18	19	20
ft	3.3	6.6	9.8	13.1	16.4	19.7	23	26.2	29.5	32.8	36.1	39.4	42.7	45.9	49.2	52.5	55.8	59.1	62.3	65.6
lx	1447398	361849	160822	90462	57896	40205	29539	22616	17869	14474	11962	10051	8564	7385	6433	5654	5008	4467	4009	3618
fc	134467.8	33616.9	14940.8	8404.2	5378.7	3735.2	2744.2	2101.1	1660.1	1344.7	1111.3	933.8	795.7	686.1	597.6	525.3	465.3	415	372.5	336.2

Beam Angle 50%	Field Angle 10%	Cutoff Angle 2,5%	Intensity Ratio in 120° Cone	Intensity Ratio in 90° Cone
3°	5.9°	7.4°	100.0%	100.0%

ISO Diagrams

ISO Candela Diagram



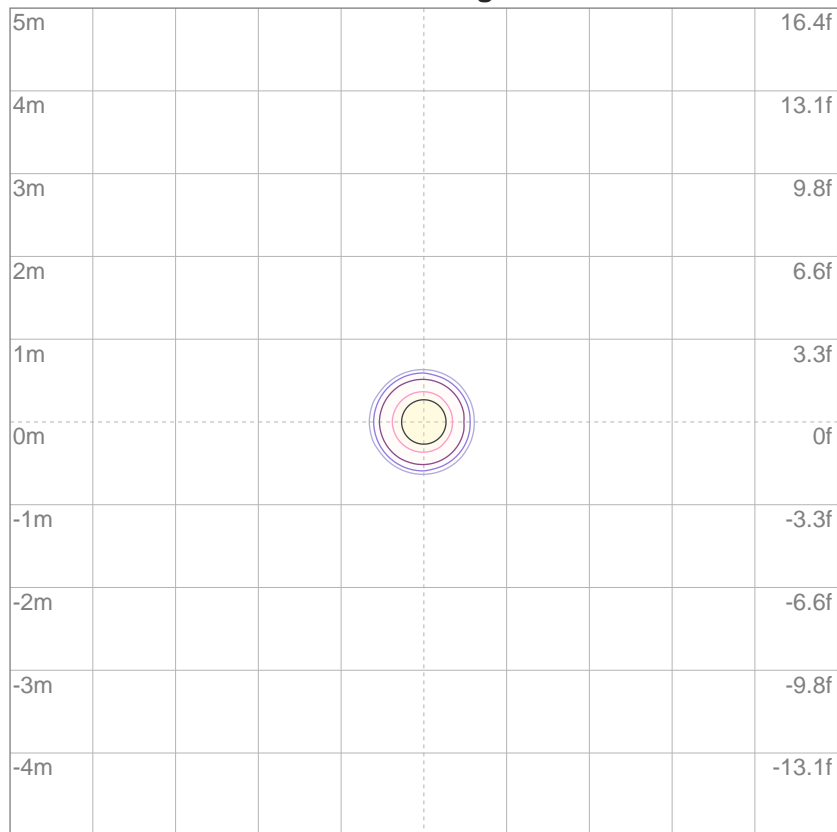
10%	144740 cd
20%	289480 cd
30%	434219 cd
40%	578959 cd
50%	723699 cd
60%	868439 cd
70%	1013178 cd
80%	1157918 cd
90%	1302658 cd

Conditions:

Number of c-planes: 2

Candela at center: 1447398 cd

ISO Lux Diagram



Mounting Height: 10 meters (33 feet)

3%	434 lx
5%	724 lx
10%	1447 lx
30%	4342 lx
50%	7237 lx

Conditions:

Number of c-planes: 2

Lux at center: 14.5K lx

*Lux distribution on a surface
when lamp is mounted at 10
meters from the surface.*